

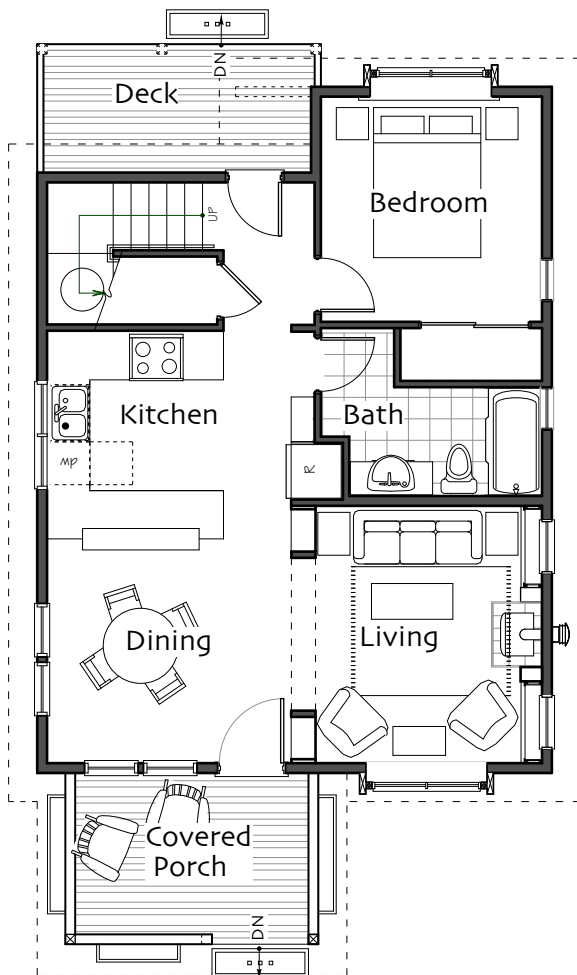
**First Floor**

Living/Dining 12' x 23'  
Kitchen 10' x 11'  
Bedroom 10' x 10'  
Bathroom full

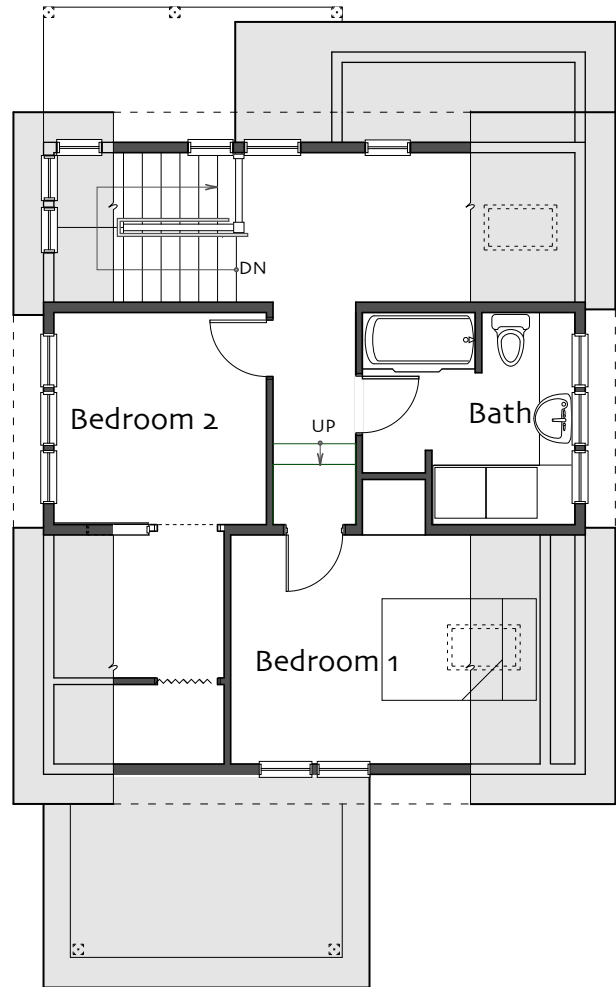
**Second Floor** (headroom >5')

Bedroom 11' x 9'  
Bedroom 2 10' x 12'  
Study 6' x 8.5'  
Bathroom three-quarter

**Footprint 24' x 42'**



**First Floor Plan**



**Second Floor Plan**

© 2004 Ross Chapin Architects • For information on ordering plans go to [www.rosschapin.com](http://www.rosschapin.com)



**ROSS CHAPIN ARCHITECTS**

Post Office Box 230 • 195 Second Street • Langley, Washington 98260  
Ph: (360) 221 2373 • Em: [inquiry@rosschapin.com](mailto:inquiry@rosschapin.com)

**Erin**